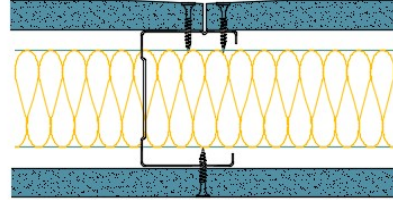


AS70-B-154(50) - SPEEDLINE System Data Sheet - Version V1 (24-10-23)

SPEEDLINE 70mm Acoustic 'C' Stud Partition
 @600mm Ctrs, with BG Gyproc 15mm SoundBloc
 each side, 50mm APR



System Performance Breakdown

Fire Resistance:

BS476 Part 22:1987:

Test Ref & Date or Applied Ref & Report:

Max Height:

Thickness:

Duty Grade: BS 5234: Part 2:1992:

Sound Insulation:

30/30 Minutes (Integrity/Insulation).

BTC 17439F - BRE Report P102396-1011A

Refer to Speedline Specification Clause

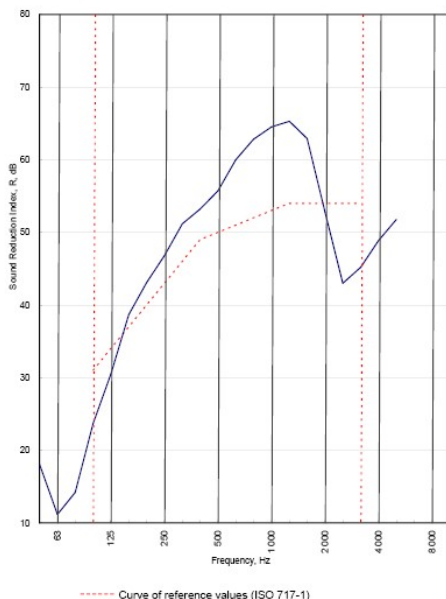
102 mm. (At Base Track, Excluding Finishes)

Heavy - Annexes A-F

50 R_wdB, Date Tested or Assessed Against - 01/07/2010

Test Code:
H16909HA
Test Date:
01/07/2010

Freq. Hz	R dB
50	18.1
63	11.2
80	14.2
100	23.7
125	30.5
160	38.7
200	43.1
250	46.8
315	51.2
400	53.2
500	55.7
630	60.0
800	62.8
1 000	64.5
1 250	65.3
1 600	62.9
2 000	52.8
2 500	43.0
3 150	45.2
4 000	48.9
5 000	51.8
6 300	
8 000	
10 000	



Rating according to BS EN ISO 717-1:1997
R_w (C;Ctr) = 50 (-3;-8) dB
 Max dev. 11 dB at 2 500 Hz

Evaluation based on laboratory measurement results obtained by an engineering method.

C ₅₀₋₁₅₀ = -8 dB	C ₅₀₋₅₀₀ = -7 dB	C ₁₀₀₋₅₀₀ = -3 dB
C _{7,50-150} = -19 dB	C _{7,50-500} = -19 dB	C _{7,100-500} = -8 dB

TESTED AT ONE OF THE UKAS ACCREDITED LABORATORIES BELOW

- B.T.C (H-Ref on Graph)
- B.R.E
- AIRO
- S.R.L

Customer: Metsec plc Hepsec Division



BTC 16963A: Page 9 of 11

SPEEDLINE Drywall Systems, Adsetts House, 16 Europa View, Sheffield Business Park, Sheffield, S9 1XH.

Tel: 0114 231 8030.

Email: enquiries@speedlinedrywall.co.uk

(As per the requirements set out in ISO/IEC 17025:2017 regarding test data the results stated have been carried out by voestalpine Metsec plc as part of the contract to supply Speedline Metal Sections to SIG Plc)